

A CLINICAL AND RADIOGRAPHIC EVALUATION OF LOW-LEVEL DIODE LASER FULL PULPOTOMY IN VITAL PERMANENT TEETH

Ehab Ali Elsayed ^{1*}, Ashraf Samir. Refai ², Amro Abd El Wahab Bayomi ³

ABSTRACT

Objective: This study was conducted to evaluate the outcome of pulpotomy in vital permanent teeth using low -level diode laser versus traditional method. **Materials and Methods:** Forty-six mature permanent molar teeth with carious exposures with symptoms indicative of irreversible pulpitis were randomly allocated equally into two groups according to the pulpotomy technique used **Group P1** :(Traditional Pulpotomy procedures). And **Group P2** :(Diode laser Pulpotomy procedures). The tooth was anesthetized, isolated using rubber dam, and disinfected with 2% chlorhexidine before caries excavation. In traditional pulpotomy group, the pulp was amputated to the level of the canal orifices. Haemostasis was achieved by placing a sterile cotton pellet moistened with saline in the access cavity for 6 min.. Retro MTA was used as the pulp capping material. In Diode laser pulpotomy group each pulp stamp was treated by Diode laser for 10 seconds at the preset parameters before placing the capping material. Clinical and radiographic evaluation was done at 6 months, 12 months, and 18 months. **Results:** When comparing Diode laser pulpotomy and traditional pulpotomy at 6,12 and 18 months, no significant difference in success rate was found between each group. The highest success rate was found in the Diode laser pulpotomy group at each evaluation times intervals. **Conclusion:** Under the limitations of this study, low-level diode laser therapy in adult pulpotomy didn't affect the success rate.

KEY WORD: Full pulpotomy, low-level diode laser, RetroMTA.

INTRODUCTION

The ultimate goal of modern restorative procedures is preservation of pulp vitality, especially in restorable young permanent teeth. The teeth with signs and symptoms of irreversible pulpitis were traditionally treated with pulpectomy and root canal treatment. Although this line of treatment is generally successful if well carried out, it is also destructive, expensive, technically challenging, and time-consuming. According to histological studies the entire pulp is rarely totally irreversibly inflamed even in cases with irreversible pulpitis, and it was found that the inflammation and necrotic areas are

usually confined to the area adjacent to the carious exposure site while the remaining radicular pulp is still vital and capable of healing if suitable treatment was carried out⁽¹⁾.

Minimally invasive endodontics has recently suggested vital pulp therapy instead of root canal treatment for the management of moderate and even severe pulpitis. These management methods include partial or coronal pulpotomy, depending on the amount of irreversibly inflamed pulp tissue to be removed while leaving the uninflamed radicular pulp tissue to recover^(2,3).

In order to improve the outcome of the pulpotomy

1. Ass. Lecturer at Department of Endodontics, Faculty of Dental Medicine, Al-Azhar University, Assiut, Egypt

2. Professor at Department of Endodontics, Faculty of Dental Medicine, Al-Azhar University, Cairo, Boys, Egypt

3. Lecturer at Department of Endodontics, Faculty of Dental Medicine, Al-Azhar University, Cairo, Boys, Egypt

• **Corresponding author:** ehabalisalma@gmail.com

procedure, various techniques and materials have been recommended. Among these alternative techniques, low-level diode laser has been described as the most suited laser for pulpotomy with its high absorbance wavelength (970 nm) producing photobiomodulation therapy (PBMT). This therapy may enhance the pulpotomy procedure's outcome since it reduces post-operative pain, modulates inflammation, provides a sterile environment, and promotes biostimulation effects without causing mechanical damage to the remaining radicular pulp tissue⁽⁴⁾. Up to date, very few studies have investigated the effects of low-level diode laser in pulpotomy procedures. The null hypothesis of this study was there would be no difference in the success rate of adult pulpotomy done with or without low-level diode laser biostimulation with RetroMTA capping material.

MATERIAL AND METHODS

Ethics approval: The study was approved by the ethics committee of the Faculty of Dental Medicine, Al-Azhar University with Ref No: 153/166.

Sample size calculation: According to the power analysis of the study the minimum sample size was 15 teeth in each of the two main groups which have a 95% power to detect a difference between means of 0.099 with a significance level (alpha) of 0.05 (two-tailed)⁽⁵⁾.

Patients Examination: Out of seventy-three, forty-six patients were randomly selected to be enrolled in this study, from the outpatient clinic of the Faculty of Dental Medicine Al Azhar University.

Clinical Examination: The patient's face and neck were examined and any swelling, lymphadenopathy, tender area, or external sinus were noted and recorded.

Intraoral Examination.

Percussion Test: Percussion test was done by gently tapping the occlusal surfaces of the target tooth and their adjacent with a blunt mirror handle, starting with the adjacent healthy teeth.

Palpation Test: Palpation test was done by applying firm digital pressure to the buccal and lingual vestibules of the target tooth and their adjacent, starting with adjacent healthy teeth.

Periodontal Probing: The probing depth of the selected tooth was measured and recorded using a calibrated periodontal probe at six positions all around the tooth.

Mobility Test: The mobility of the target tooth was examined by applying pressures using the back ends of two mirror handles, in a Bucco-lingual direction, and the tooth mobility was scored as described by Millers ⁽⁶⁾as follows: Grade 1: Mobility up to 1mm. Grade II: Mobility more than 1 up to 2 mm. Grade III: Mobility over 2 mm.

Pulp Sensibility Testing (Cold test): The target tooth and its adjacent teeth were isolated with cotton and air-dried. The target tooth was tested by applying Endo Ice Ethyl chloride spray* to a cotton pellet and then applied to the mid-facial surface of the tooth for 5sec or until the patient responded. Teeth with intense sharp lingering pain that persisted for more than 30 seconds were considered to have irreversible pulpitis⁽⁷⁾.

Radiographic examination: A digital periapical radiograph was taken for each target tooth using a 70-Kvp machine with a 0.3-second exposure time using a digital a sensor with the paralleling technique.

Inclusion criteria:

- Health patient aged between 25-35.
- Restorable mature permanent first and second molars with irreversible pulpitis

Exclusion criteria: After assessment and clinical and radiographic examination, any teeth with any of the following criteria were excluded from the study.

*Endo ICE–Coltene/Whaledent, OH, USA.

**Fona XDC, Via Galilei, Assago, Italy.

†Vatech EZ Sensor, Humanray Co. Ltd., Korea.

- Teeth with buccal restoration
- Non-vital teeth that were not responsive to thermal stimuli.
- Presence of swelling or sinus tracts.
- Teeth which showed sensitivity to percussion.
- Teeth that have grade II and III mobility according to Millers classification.
- Teeth with immature apices.
- Teeth with internal or external resorption
- Teeth with periapical pathosis.

After patient acceptance, the treatment was then explained to the patient, and was informed about possible complications that may occur during and after the treatment. A written Arabic consent was then signed by the patient.

Grouping of patients: The patients in the study were randomly allocated into two groups according to the pulpotomy technique used (variable P) Group P1: Traditional Pulpotomy procedures. And Group P2: Diode laser Pulpotomy procedures (20 patients for each group).

Pulpotomy procedure.

Access cavity preparation and build-up: After clinical and radiographical examination, local anesthesia (1.8ml of 2% Mepivacaine HCl with levonordefrin 1:20.000) was administrated, then the tooth was isolated using rubber dam. The crown of the treated tooth was disinfected with 2% chlorhexidine*, and removal of all caries and defective restorations was done using a high-speed size #3 carbide round bur** mounted in high-speed handpiece with coolant. After that, the cavity was rinsed with saline solution before building up the missing parts of the target tooth using a light-cured resin-modified glass ionomer***. The pulp chamber was then deroofed using a new size #2 carbide round bur, while complete de-roofing and cavity

refinement was done using an Endo Z bur.

Group P1: (Traditional Pulpotomy procedures): After complete deroofing, the coronal pulp was amputated to the level of the orifice using a high-speed size #2 round bur followed by rinsing the pulp chamber thoroughly with 5ml 0.9% saline solution****. The pulp stumps were evaluated to ensure that all canals were vital and the teeth with necrotic pulp tissue were also excluded and replaced with another one. Hemostasis was then achieved by placing a sterile cotton pellet moistened with saline in the access cavity for 6 min. Any tooth that continued bleeding was excluded and replaced with another one⁽⁸⁾.

Group P2: (Diode laser Pulpotomy procedures): Pulpotomy in this group was done as previously done in traditional group, then after establishing hemostasis, low-level laser energy at (970nm, power .5W, duty cycle 50%, and frequency 5H) was applied to each pulp stump for 10 sec. through 320 microns optical fiber tip*****. The laser was used in pulsed non-contact mode at the level of the occlusal surface of the tooth⁽⁹⁾. Before using the Laser device, all protective measures were taken.

Applying of Retro MTA capping material: Retro MTA***** was mixed according to manufacturer's instruction for 20 sec. until the shiny surface disappeared. The mixed Retro MTA was applied in both groups against the pulp stumps using the Micro apical placement system (MAP)***** and adapted to the floor with a large plugger size # 4***** to a 2-3 mm thickness. Finally moist cotton pellet was used to better adapt the Retro MTA then the material was allowed to set for 5 min. The tooth was then restored with resin-bonded composite***** and an immediate postoperative periapical radiograph was taken⁽¹⁰⁾.

**** Normal Saline solution, Otsuka, Cairo, Egypt.

***** (SIROLaser Advance, Bensheim, Germany

***** Meta Biomed Co, Ltd, Seoul, Korea.

***** Produits Dentaires SA, Switzerland.

*****Dentsply Maillefer, Ballaigues, Switzerland.

***** 3M, ESPE, St. Paul, USA.

* Chlorhexidine mouthwash, Health point, Cairo, Egypt.

** SS White Burs, Inc., New Jersey, USA.

*** Riva Light Cure, SDI, Victoria, Australia.

Clinical and radiographic evaluation: The patients were evaluated clinically and radiographically at intervals of 1 week, 6, 12, and 18 months. The periapical area condition was evaluated using the periapical index scoring system as described by Ørstavik et al⁽¹¹⁾. Table 1.

TABLE (1) Showing the periapical index system by Ørstavik et al. used for radiographic evaluation of apical area.

Score 1	Normal periapical structures.
Score 2	Small changes in bone structures.
Score 3	Change in bone structure with mineral loss
Score 4	Periodontitis with well-defined radiolucent area.
Score 5	Severe periodontitis with exacerbating features

Assessment of success or failure

Assessment of success or failure was done using the technique described by Galani et al⁽¹²⁾. Each patient

was evaluated at different times; (T1): after 6 months, (T2): after 12 months, and (T3) after 18 months.

- Treatment was considered successful if the patient's final restoration was intact and the patient demonstrated no clinical symptoms (pain (spontaneous or on chewing), swelling, or sinus tract), and had a PAI score of 1.
- Treatment was considered uncertain if the patient's final restoration was intact, and the patient demonstrated no clinical symptoms (pain (spontaneous or on chewing), swelling, or sinus tract), and a PAI score of 2.
- Treatment was considered a failure in the following situations:
 1. Any case in which the final restoration was not intact. Irrelevant clinical and radiographic symptoms.

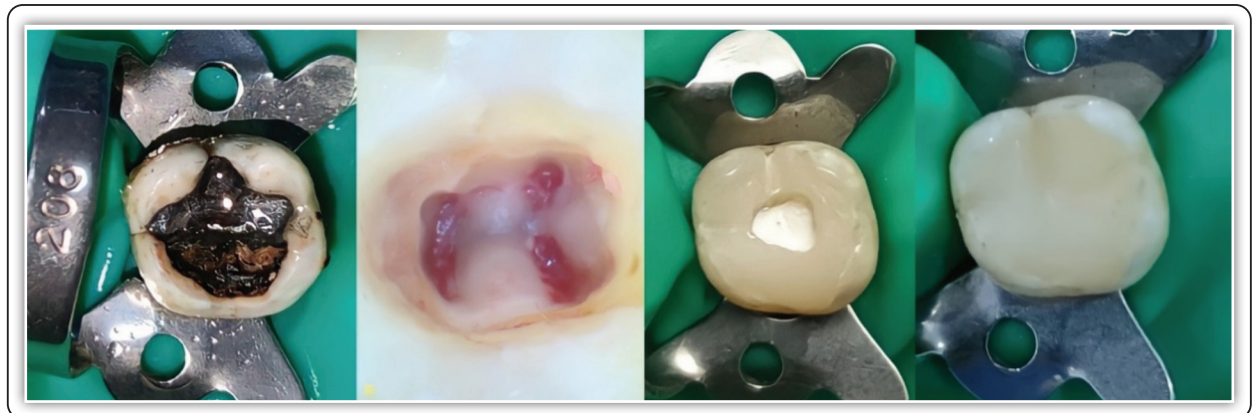


FIG (1) Showing photographs of pulpotomy steps of lower 2nd molar.

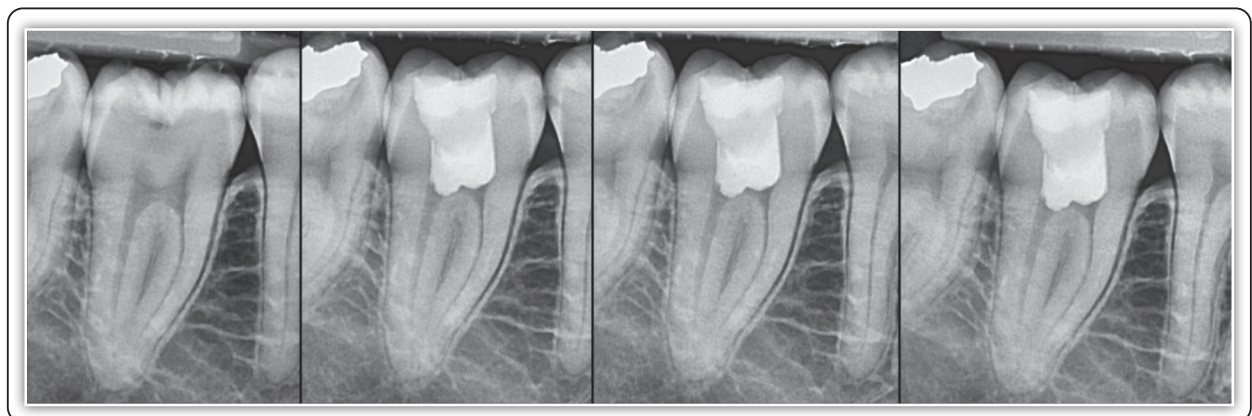


FIG (2) Radiographs of lower 2nd molar A) preoperative B) after 6 months C) after 12 months D) after 18 months.

2. Any case in which the final restoration was intact and the patient demonstrated clinical symptoms. Irrelevant of PAI score.
3. Any case in which the final restoration was intact and the patient had a PAI score of 3 or above. Irrelevant of clinical symptoms.

Data management and analysis: Data were collected, tabulated, and statistically analyzed using independent sample T to compare the two groups. The mean and SD values were calculated for each group in each test. The significance level was set at $P \leq 0.05$. Statistical analysis was performed using SPSS for Windows 25 software.

RESULT

A total of 46 cases were treated with adult pulpotomy during the course of the study. During the pulpotomy procedure, 6 cases had bleeding time of more than 6 min. and were excluded. Furthermore, one case did not attend during 6-month follow-up period. Therefore, only 39 cases were included in the statistics of the current study.

Comparison between evaluation time intervals

A. *Low-level diode laser pulpotomy tech.* The success rate in Low-level diode laser pulpotomy group was 95% at 6 months, 94% at 12 months, and 89% at 18 months. There was no significant difference between the success rate in the low-level diode laser pulpotomy group between 6,12 and 18 months ($P=.264$). (table 2).

B. *Traditional pulpotomy tech.* The success rate in

the traditional pulpotomy group was 78% at 6 months, 72% at 12 months, and 70% at 18 months. There was no significant difference between the success rate in the traditional pulpotomy group between 6,12 and 18 months ($P=.093$).

Comparison between different groups:

Data in this section was statistically analyzed using Fischer exact test, Chi-Square test, and McNemar test.

A. *At 6- months:* When comparing Diode laser pulpotomy and traditional pulpotomy at 6 months, no significant difference was found between them ($P=.134$). the highest success rate at 6 months was found in the low-level diode laser pulpotomy group 95% while the lowest was found in the traditional pulpotomy group 78%.

B. *At 12- months:* When comparing Diode laser pulpotomy and traditional pulpotomy at 12 months, no significant difference was found between them ($P=.527$). the highest success rate at 12 months was found in the low-level diode laser pulpotomy group 94% while the lowest was found in the traditional pulpotomy group 72%.

C. *At 18- months:* When comparing Diode laser pulpotomy and traditional pulpotomy at 18 months, no significant difference was found between them ($P=.456$). the highest success rate at 18 months was found in the low-level diode laser pulpotomy group 89% while the lowest was found in the traditional pulpotomy group 70%.

TABLE (2) Comparison of the success in pulpotomy tech. at 6, 12, 18 months.

	Outcome at 6 m.		Outcome at 12 m		Outcome at 18 m.		test of sig.
	Success 34out 39		Success 31 out 37		Success 29 out 36		
P. tech	N	%	N	%	N	%	
Laser	19 out of 20	95%	18 out of 19	94%	17out of 19	89 %	P=.264
Traditional	15 out of 19	78%	13 out of 18	72%	12 out of 17	70%	P=.093
test of sig.	P=.134		P=527		P=.456		

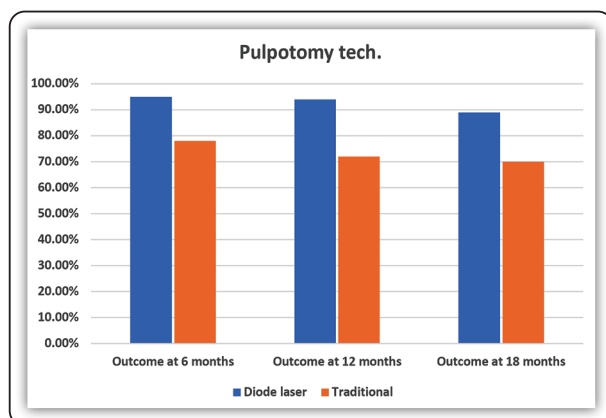


FIG (3) A bar chart representing a comparison between the success and failure of Diode laser and traditional pulpotomy at 6, 12 & 18 months.

DISCUSSION

Recently coronal pulpotomy has been advocated as a less invasive treatment for mature adult teeth with irreversible pulpitis as it has the potential to change the way we do endodontics^(13, 14). A lot of research has been done to evaluate the short- and long-term success of pulpotomy treatment^(15, 16). Furthermore, low-level diode lasers have been used in many different dental branches such as implantology, operative dentistry, prosthetic dentistry, and oral surgery. It has the advantage of being minimally invasive and has been shown to decrease post-operative pain and improve tissue healing and regeneration^(17, 18). Its use in adult pulpotomy procedures has not been investigated thoroughly. This study aimed to compare the outcome of full pulpotomy in permanent teeth using low-level diode laser biostimulation in comparison to the traditional method.

The null hypothesis of this study was there would be no difference in the success rate of adult pulpotomy done with or without low-level diode laser biostimulation with RetroMTA capping material. The null hypothesis was accepted with regards to the effect of low-level diode laser in pulpotomy success rate.

A total of 39 patients were evaluated for 6 months while 37 patients were evaluated for 12 months and

36 patients were evaluated for 18 months which was comparable to other research done in this field^(12, 16).

In this study, only maxillary and mandibular molars with irreversible pulpitis in patients aged between 25-35 were selected as these are the most common teeth and age for carious exposure.^(14, 19). Furthermore, it has been previously established that the type of teeth and age of the patient does not appear to be a significant factor in the outcomes of pulpotomy^(12, 20).

As the definition of irreversible pulpitis is qualitative in nature, different classifications were used to define irreversible pulpitis as Wolter's classification that classifies pulpitis into initial, mild, moderate, and severe pulpitis⁽²¹⁾. Hashim classification also classifies pulpitis into mild reversible, severe reversible, and irreversible pulpitis⁽²²⁾. In this study diagnosis of irreversible pulpitis was determined according to the diagnostic terminology approved by The American Association of Endodontists, as it used in similar research⁽⁷⁾.

In this study during pulpotomy procedures, hemostasis was achieved using a sterile cotton pellet moistened with saline which is similar to other studies. Although several studies have used hemostatic agents such as sodium hypochlorite⁽¹⁹⁾ and ferric sulfate⁽²³⁾. In this study, saline was used to allow the ability to evaluate hemostasis without any intervention of other chemicals⁽²⁴⁾. With regards to hemostasis time, there is no current standard on the definite time of hemostasis in adult pulpotomy. In this study, bleeding of the pulp for more than 6 min was excluded similar to other studies that have been done on this topic^(16, 25).

With regards to the pulpotomy technique, a Diode laser with 970 nm wavelength was used in this study as it is the most appropriate laser for photobiomodulation protocols as it's highly absorbed by pigmented vascularized chromophores making it suitable for pulp^(4, 26). Each pulp stump was lased in a non-contact mode with parameters

(power.5W, duty cycle 50%, and frequency 5H) to give time for thermal release to produce a photochemical rather than photothermal effect preventing excessive heating and charring with subsequent thermal damage⁽²⁷⁾.

Regarding the choice of capping material, Retro MTA was used as it is considered a modification of the standard MTA material with better handling properties and shorter setting time⁽²⁸⁾.

Assessment of success or failure was done using a combined clinical and radiographic examination described by Galani M. et al 2017⁽¹²⁾. as detailed in section 3.7. proposed simple evaluation criteria for pulpotomy and has been used in another similar research⁽²⁹⁾.

With regards to success and failure, the overall success rate in this study was 87.2% after 6 months, 83.7% after 12 months, and 80.5% after 18 months with no significant difference in the success rate between the evaluation periods. Previous research has established that the success rate of adult pulpotomy ranges between 78.1% to 98, the result of this study falls within this range^(3,20). This variability in outcomes may be attributed to the different criteria used to evaluate success and failure as well as the length of follow-up time of the different studies.

With regards to the pattern of failure, the first case failed immediately after the 3rd week, four cases after 6 months, three cases after 12 months, and two cases after 18 months with no significant difference between evaluation times. This pattern is similar to the other research done in this field ^(20, 30).

Low-level diode laser has been used successfully in orthodontics to improve alveolar bone remodeling and reduce pain during the orthodontic procedure. Additionally, it was used in oral medicine, to reduce the time needed to treat lesions and reduce pain. In the other hand it was used in oral surgery to improve wound healing and reduce the severity and duration of pain and swelling.^(31,32). Under the condition of this

study, there was no significant difference in success rate between traditional pulpotomy and Low-level diode laser pulpotomy groups after 18 months (89%, and 70%) ($P=.456$). No research has been done to date evaluating the effect of low-level diode laser in adult pulpotomy. In the field of pediatric dentistry, it has been researched extensively and these results are similar to the results of this study ^(4, 33). In contrast, Liu et al,⁽³⁴⁾ compared traditional and Nd: YAG laser pulpotomy and found that laser pulpotomy groups had a significantly higher success rate. This may be attributed to the use of different types of lasers (Nd: YAG laser versus low level diode laser), laser parameters (2 W, 20 Hz, 124 J/cm² versus 970nm .5W, duty cycle 50%, 5H), and evaluation periods (ranged from 9 months to 66 months versus 18 months).

The current research in adult pulpotomy is focused on establishing a baseline outcome percentage of success so that clinicians can make better decisions for their patients in clinical practice. A lot of available research has been directed to evaluate preoperative conditions as a predetermining factor of the success of adult pulpotomies. The use of adjuvants as lasers and topical medications may become more widespread if more research is done to evaluate their effect on adult pulpotomy success.

CONCLUSION

Based on the results of the present study, low-level diode laser therapy in adult pulpotomy didn't affect the success rate.

REFERENCES

1. Ricucci D, Loghin S, Siqueira Jr JF. Correlation between clinical and histologic pulp diagnoses. *Journal of Endodontics*. 2014;40(12):1932-9.
2. Hakami AH, Alobaysi AI, Almazyad AY, Al Aswad NA. Pulpotomy success in permanent mature teeth with irreversible pulpitis: a systematic review. *IJMD*. 2020;4(3):560-6.
3. Tzanetakakis GN, Koletsi D, Georgopoulou M. Treatment outcome of partial pulpotomy using two different calcium

- silicate materials in mature permanent teeth with symptoms of irreversible pulpitis: A randomized clinical trial. *International Endodontic Journal*. 2023;56(10):1178-96.
4. Ebrahimi M, Changiz S, Makarem A, Ahrari FJLiMS. Clinical and radiographic effectiveness of mineral trioxide aggregate (MTA) partial pulpotomy with low power or high power diode laser irradiation in deciduous molars: a randomized clinical trial. *Lasers in Medical Science*. 2022;37(4):2293-303.
 5. Faul F, Erdfelder E, Lang A-G, Buchner A. G* Power 3: A flexible statistical power analysis program for the social, behavioral, and biomedical sciences. *Behavior Research Methods*. 2007;39(2):175-91.
 6. Miller SC. *Textbook of Periodontia*: Philadelphia. P. Blakiston's Son and Co. 1938:151.
 7. Glickman G. aSJE, AAE Regenerative. *Endodontics Colleagues for Excellence*. Chicago, Illinois: American Association of Endodontists, 2013, 1-8.:685-718.
 8. Taha N, Abdelkader SJJeJ. Outcome of full pulpotomy using Biodentine in adult patients with symptoms indicative of irreversible pulpitis. *International Endodontic Journal*. 2018;51(8):819-28.
 9. Uloopi K, Vinay C, Ratnaditya A, Gopal AS, Mrudula K, Rao RC. Clinical evaluation of low level diode laser application for primary teeth pulpotomy. *Journal of Clinical and Diagnostic Research*:. 2016;10(1):67-4.
 10. Manohar S, Bazaz N, Neeraja G, Subramaniam P, Sneharaj N. A comparative evaluation of four regenerative materials for pulpotomy in primary molars: An in vivo study. *Dental Research Journal*. 2022;19(1):1-8.
 11. Ørstavik D, Kerekes K, Eriksen HM. The periapical index: a scoring system for radiographic assessment of apical periodontitis. *Dental Traumatology*. 1986;2(1):20-34.
 12. Galani M, Tewari S, Sangwan P, Mittal S, Kumar V, Duhan JJJoe. Comparative evaluation of postoperative pain and success rate after pulpotomy and root canal treatment in cariously exposed mature permanent molars: a randomized controlled trial. *Journal of Endodontics*. 2017;43(12):1953-62.
 13. Duncan HF, El-Karim I, Dummer PM, Whitworth J, Narendrababu V. Factors that influence the outcome of pulpotomy in permanent teeth. *International Endodontic Journal*. 2023;56(2):62-81.
 14. Duncan H, Galler K, Tomson P, Simon S, El-Karim I, Kundzina R, et al. European Society of Endodontology position statement: Management of deep caries and the exposed pulp. *International Endodontic Journal*. 2019;52(7):923-34.
 15. Taha NA, Al-Khatib HJJoe. 4-Year Follow-up of Full Pulpotomy in Symptomatic Mature Permanent Teeth with Carious Pulp Exposure Using a Stainproof Calcium Silicate-based Material. *Journal of Endodontics*. 2022;48(1):87-95.
 16. Ramani A, Sangwan P, Tewari S, Duhan J, Mittal S, Kumar VJIEJ. Comparative evaluation of complete and partial pulpotomy in mature permanent teeth with symptomatic irreversible pulpitis: a randomized clinical trial. *International Endodontic Journal*. 2022;55(5):430-40.
 17. Carneiro AMP, Barros APO, de Oliveira RP, de Paula BLF, Silva AM, de Melo Alencar C, et al. The effect of photobiomodulation using low-level laser therapy on tooth sensitivity after dental bleaching: a systematic review. *Lasers in Medical Science*. 2022;37(7):2791-804.
 18. Sigaroodi AK, Motevasseli S, Maleki D, Maleki D, Fard RS. Low-level laser and management of common complications after the mandibular third molar surgery: A double-blind randomized clinical trial. *Dental Research Journal*. 2023;20:1-10.
 19. Uesrichai N, Nirunsittirat A, Chuveera P, Srisuwan T, Sasstraruji T, Chompu-Inwai PJJeJ. Partial pulpotomy with two bioactive cements in permanent teeth of 6-to 18-year-old patients with signs and symptoms indicative of irreversible pulpitis: a noninferiority randomized controlled trial. *International Endodontic Journal*. 2019;52(6):749-59.
 20. Taha NA, Al-Rawash MH, Imran ZJIEJ. Outcome of full pulpotomy in mature permanent molars using 3 calcium silicate-based materials: A parallel, double blind, randomized controlled trial. *International Endodontic Journal*. 2022;55(5):416-29.
 21. Wolters W, Duncan H, Tomson P, Karim I, McKenna G, Dorri M, et al. Minimally invasive endodontics: a new diagnostic system for assessing pulpitis and subsequent treatment needs. *International Endodontic Journal*. 2017;50(9):825-9.
 22. Hashem D, Mannocci F, Patel S, Manoharan A, Brown J, Watson T, et al. Clinical and radiographic assessment of the efficacy of calcium silicate indirect pulp capping: a randomized controlled clinical trial. *Journal of dental research*. 2015;94(4):562-8.
 23. Ahmed MI, Eid GEHM, Youssef HA. Clinical and Radiographic Assessments of Potassium Nitrate in Polycarboxylate Versus Mineral Trioxide Aggregate as Pulpotomy Biomaterials in Immature Mandibular First Permanent Molars: A Randomized Clinical Trial. *Journal of Endodontics*. 2021;47(11):1672-82.

24. Kang C-M, Sun Y, Song JS, Pang N-S, Roh B-D, Lee C-Y, et al. A randomized controlled trial of various MTA materials for partial pulpotomy in permanent teeth. *Journal of Dentistry*. 2017;60(5):8-13.
25. Taha NA, Abdulkhader SZJJoe. Full pulpotomy with bio-dentine in symptomatic young permanent teeth with carious exposure. *Journal of Endodontics*. 2018;44(6):932-7.
26. Jamali S, Nasrabadi N, Darvish M, Khosravi SJJoO, Maxillofacial Surgery M, Pathology. Clinical and radiographic outcomes comparison between various types of laser pulpotomy and formocresol pulpotomy on primary molars: A systematic review and meta-analysis. 2021;33(1):75-82.
27. Cronshaw M, Parker S, Anagnostaki E, Mylona V, Lynch E, Grootveld M. Photobiomodulation dose parameters in dentistry: a systematic review and meta-analysis. *Dentistry Journal*. 2020;8(4):114.
28. Lee H, Shin Y, Kim S-O, Lee H-S, Choi H-J, Song JS. Comparative study of pulpal responses to pulpotomy with ProRoot MTA, RetroMTA, and TheraCal in dogs' teeth. *Journal of Endodontics*. 2015;41(8):1317-24.
29. Linas N, Decerle N, Munoz-Sanchez M-L, Faulks D, Collado V, Nicolas E, et al. Long-term outcomes of full pulpotomy in permanent molars for patients treated in a single, short session under special conditions. *Journal of Endodontics*. 2020;46(11):1597-604.
30. Jassal A, Nawal RR, Yadav S, Talwar S, Yadav S, Duncan HFJIEJ. Outcome of partial and full pulpotomy in cariously exposed mature molars with symptoms indicative of irreversible pulpitis: A randomized controlled trial. *International Endodontic Journal*. 2023;56(3):331-44.
31. Ozcelik O, Cenk Haytac M, Kunin A, Seydaoglu GJJocp. Improved wound healing by low-level laser irradiation after gingivectomy operations: a controlled clinical pilot study. *Journal of Clinical Periodontology*. 2008;35(3):250-4.
32. Mayer L, Vacilotto Gomes F, Carlsson L, Gerhardt-Oliveira M. Histologic and Resonance Frequency Analysis of Peri-Implant Bone Healing After Low-Level Laser Therapy: An In Vivo Study. *International Journal of Oral and Maxillofacial Implants*. 2015;30(5):250-8.
33. Satyarth S, Alkhamis AM, Almunahi HF, Alsuhaymi MOA, Vadde HB, Senapathi SN, et al. Comparative evaluation of mineral trioxide aggregate pulpotomy and laser-assisted mineral trioxide aggregate pulpotomy: An original research article. *Journal of Microscopy and Ultrastructure*. 2021;9(1):7-11.
34. Liu J-f. Effects of Nd: YAG laser pulpotomy on human primary molars. *Journal of Endodontics*. 2006;32(5):404-7.